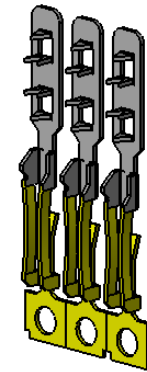
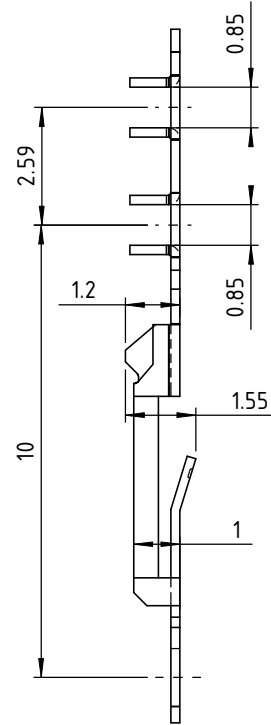
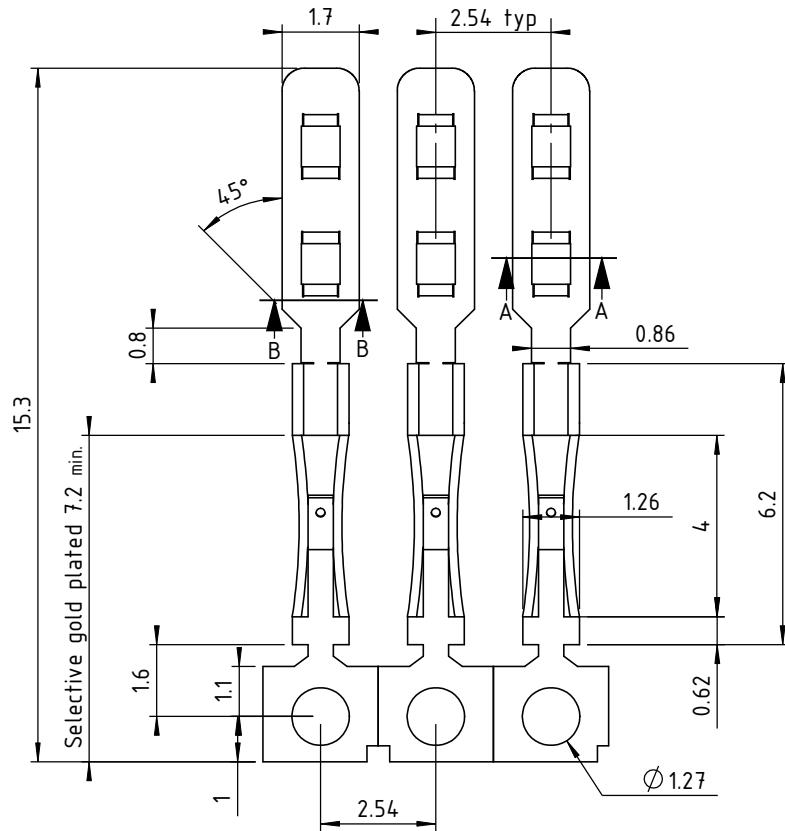
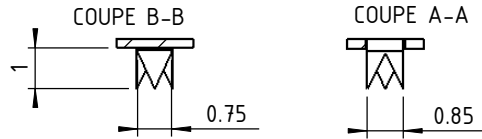


D

C

B

A



## TECHNICAL DATA

### MATERIAL

- Phosphor bronze

### PLATING

- The standard connector is tin plated (Thickness : Ni 2 $\mu$  + Sn 5 $\mu$ )
- Contact area's selective gold plating (Thickness : Ni 2 $\mu$  + Au 0.15 $\mu$ )

### MECHANICAL SPECIFICATIONS

- Contact resistance to stripping from circuit
- 15 N mini (3.3 lbs) perpendicular to the tracks (breaking-up of the conductor)
- 50 N mini (11.2 lbs) parallel to the tracks (breaking-up of the conductor)

### ELECTRICAL SPECIFICATIONS

- Contact resistance 5 m $\Omega$  maxi
- Contact resistance after climatic tests 6 m $\Omega$  maxi
- Insulation resistance 5.10<sup>5</sup> M $\Omega$  à 500 V
- Withstanding voltage 1100 V eff.
- Capacitance between two contacts 4pF maxi
- Direct current rating per contact 3 A permanent
- Alternating current rating per contact 5 A permanent

### THERMIC SPECIFICATIONS

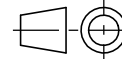
- Connector operating temperature -55°C à +150°C -67°F to +302°F

\* : X code corresponding to the conditioning  
1 = Incomplete reel  
2 = Complete reel

Ce plan est la propriété exclusive de la société NICOMATIC.  
Il ne peut être reproduit sans son autorisation. Loi du 11.03.1902.

This document and drawings, sketches, and schematic plans are the property of the NICOMATIC company, and no parts thereof may be reproduced and used without the written consent of the owner.  
Law dated 11.03.1902

Z.I. Les Bracots  
F-74890 Bons-en-Chablais  
Tel. : +33 (0)4.50.36.13.85  
Fax : +33 (0)4.50.36.11.33



Echelle/Scale  
6:1

Réf. catalogue /  
*Catalogue Reference* 11506-3X

Repertoire / *Folder*  
X:\Méthodes\01 - Crimpflex\02 - Contact\11506\

18/11/08	H.L.	E.M.	D.Z.
Date	Drawn	Checked	Approved

Désignation : Contact femelle force d'insertion faible doré selectif

Designation : Selective gold plated low insertion force female pin

Tolérance générale /  
*General tolerance* ±0.2

N° Plan /  
*Drawing N°* 11506-3X\_cl\_anglais

Page  
1/1

A4

D

A