

D

C

B

A

4

3

2

1

4

3

2

1



TECHNICALS FEATURES

MATERIAL

INSULATOR : Special PPS (Polyphenylene Sulfide Fiberglass filled thermoplastic) UL 94-V0

- Radiation resistance
No humidity absorption
Oxygen free

Note : PPS characteristics are recognized for space applications

CRIMP LF CONTACTS :

Male :

- Body: Copper alloy / Ni + Au 1µ

FIXING HARDWARE :

- Latch (optional): Beryllium alloy / Ni 3µ

ELECTRICAL for LF Contacts

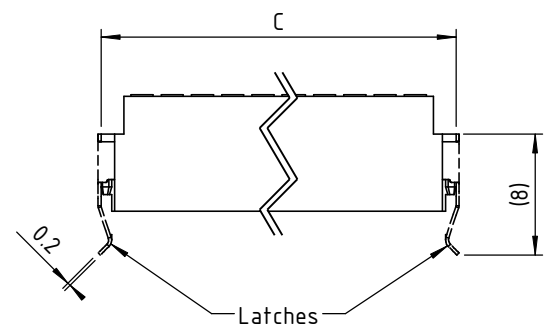
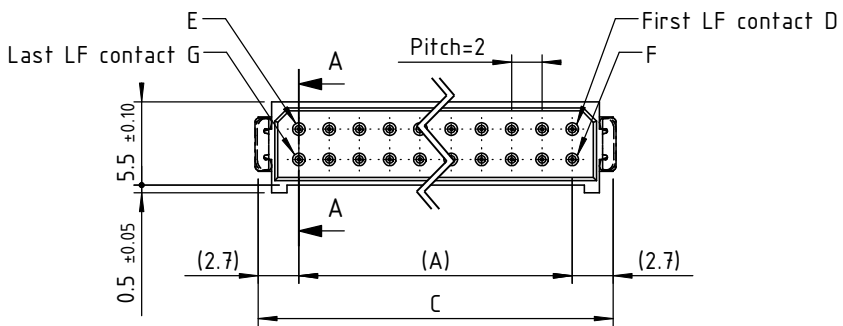
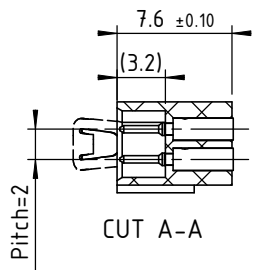
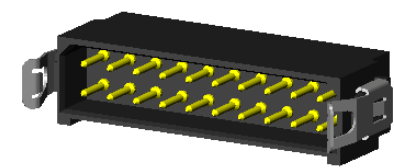
- All contacts: 3 A max. @ 25°C, 2.2 A max. @ 85°C
Working voltage (sea level): Tested at 800 V DC
Proof voltage: Tested at 1200 V DC
Contact resistance (initially): max. 10 mΩ
Insulation resistance: 1000 MΩ min

MECHANICAL for LF Contacts

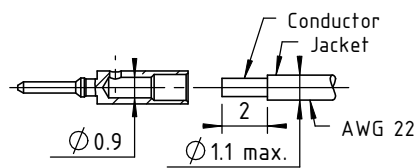
- Mechanical operations: 500 cycles min. up to 2500.
Contact insertion and withdrawal force: 2 N max. / 0.2 N min. per contact
Contact retention in insulator: 10 N min.
Contact replacement in insulator: 3 cycles

ENVIRONMENTAL

- Temperature range: From -60°C to +260°C
Vibration severity: 0.75mm, 10 g RMS 6 hours long random with superimposed sinusoid. No intermittencies measured when using an H.S.L.I. (High Speed Logic Interrupt) detector with a trip threshold of 2 ns.
Shock severity: 100g for 6 ms
Solvent resistance: HcFc 141 bMGX (ATOCEM) solvent
Salt spray test: 96 hrs
Humidity test: 56 days @ 90% humidity



LF contact 12960 type "C" to crimp or to solder scale : 3:1



Marking as referenced in the CMM catalogue pages 12 & 13

CONNECTOR SERIE 200 MALE table with columns: LF contact number nn, Length without Latches in mm (A, C), Signal contacts reference mark number (D, E, F, G). Rows range from 04 to 50.

L : latches fitted
Leave blank : no latches

Tools recommended for Latches and LF contacts table with columns: Tools recommended for LF contacts, Tools recommended for Latches.

NICOMATIC logo and contact information: www.nicomatic.com, Mail : nicomatic@nicomatic.fr, Tel : +33 (0)4.50.36.13.85

Revision table with columns: Iss, Date, Drawn, Checked, Approved. Item: Connector CMM200 male on cables AWG 22, nn LF contacts

This document and drawings, sketches, and schematic drawings are the property of the NICOMATIC company. and no parts thereof may be reproduced and used without the written consent of the owner. Law dated 11.03.1902

Catalogue Reference : 201Cnn(L)

General tolerance ±0.2, Scale 2:1, Page 1/1

A4