

Tools

DANIELS MH800 TOOL AND POSITIONER P/N K1131 & K1692

Tools reference	Barrel
DANIELS MH800 only	MH800
Positioner K1692 only	C12929
Positioner K1131 only	K1131
DANIELS MH800 & K1131	C12237
DANIELS MH800 & K1692	C14925



Crimp barrel accommodation for LF contacts					
Hand crimp tool reference	Positioner	Contacts type	Contacts reference	Wire size (AWG)	Crimp tool setting
DANIELS MH800	K1692	Male C	I2960	22	6
DANIELS MH800	K1692	Male S	I2969	24	7
DANIELS MH800	K1692	Male S	I2969	26 & 28	6
DANIELS MH800	K1692	Female C	C13064-P	22	6
DANIELS MH800	K1692	Female S	C12468	24	7
DANIELS MH800	K1692	Female S	C12468	26 & 28	6

Crimp barrel accommodation for central contact HF30 series			
Hand crimp tool reference	Positioner	Conductor	Crimp tool setting
DANIELS MH800	K1131	Ø 0,30	2 & 3
DANIELS MH800	K1131	Ø 0,50	3 & 4

DANIELS HX3 TOOL P/N 13858

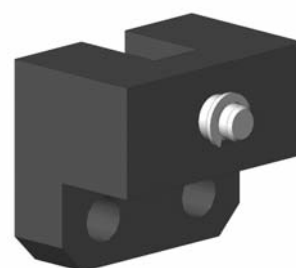
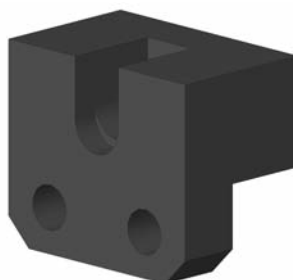
Tools reference	Reference Nicomatic
DANIELS HX3 only	I3858
DANIELS HX3 & C13847	C12238
DANIELS HX3 & C14680	C14770
DANIELS HX3 & C14923	C14924



Crimp barrel accommodation for crimping coaxial contact shield		
Hand crimp tool reference	Dies	Hexagonal imprint
DANIELS HX3	C13847	Hex. 1,9 / Hex. 2,4 / Hex. 2,8
DANIELS HX3	C14680	Hex. 3,25 / Hex. 4
DANIELS HX3	C14923	Hex. 1,9 / Hex. 2,4 / Hex. 2,8

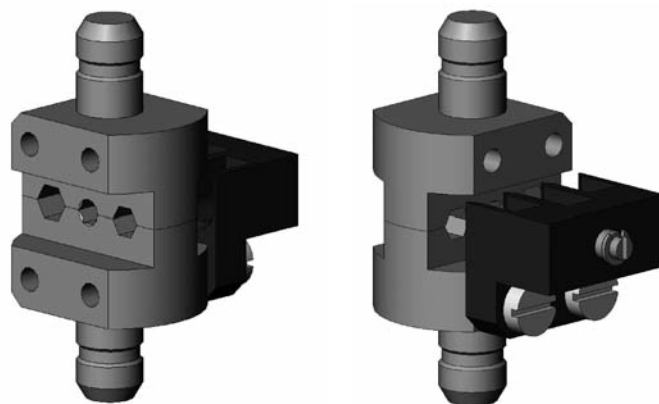
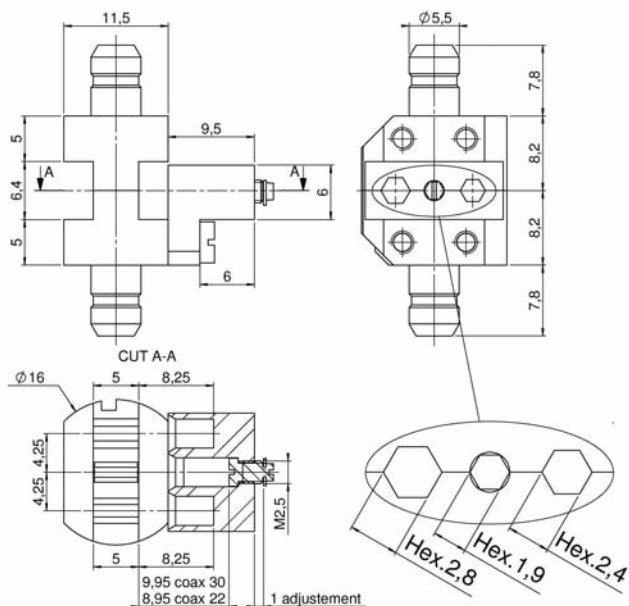
STOP C14922 (HP CONTACT)

Stop for crimping of HP30 & HP22 contacts with a Hex. 1,9 mm (compatible with C13847 crimp dies).

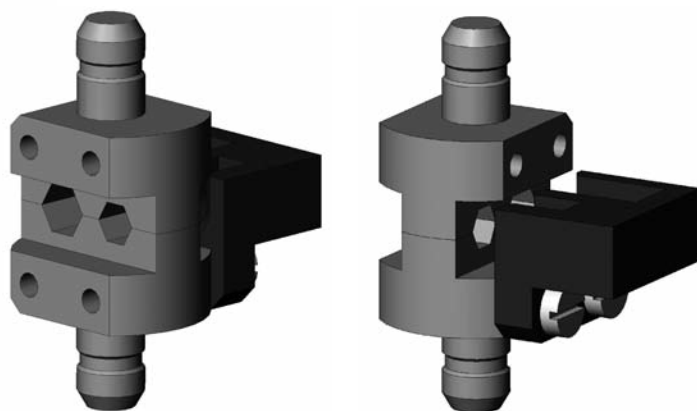
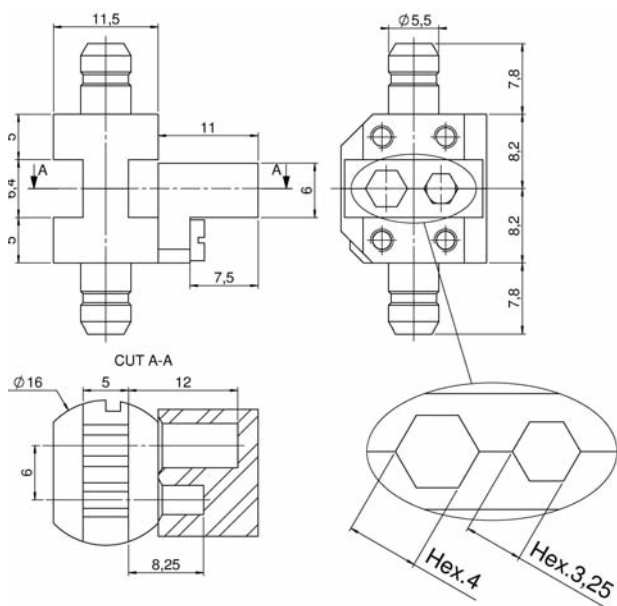


Tools

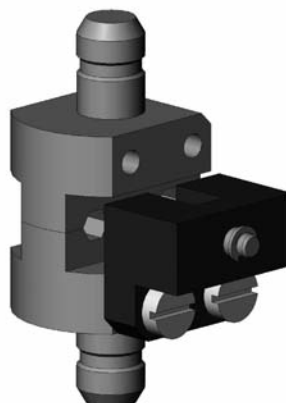
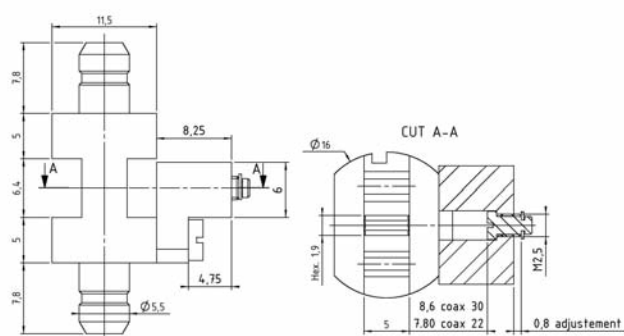
CRIMP DIE C13847 FOR DANIELS HX3 TOOL (HF CONTACT)



CRIMP DIE C14680 FOR DANIELS HX3 TOOL (HF CONTACT)

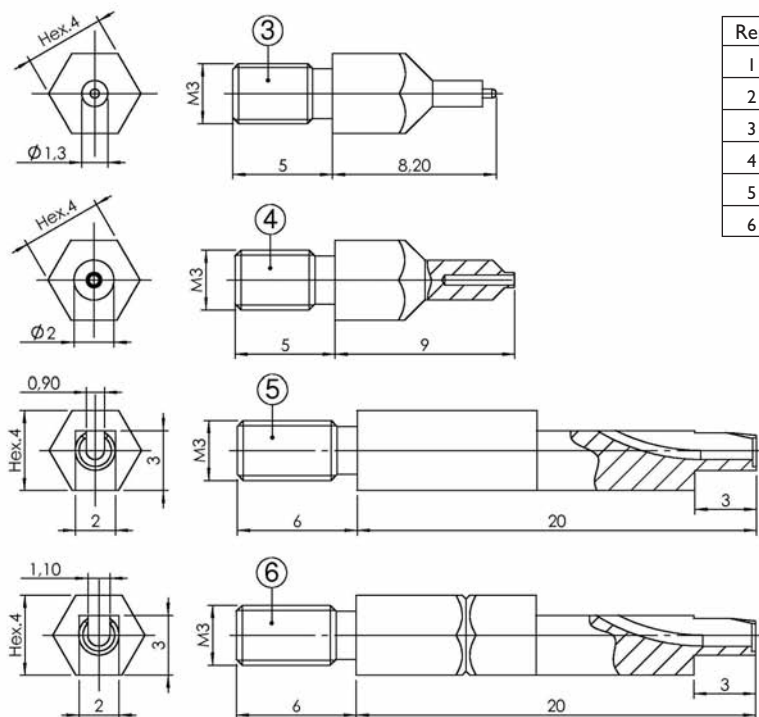


CRIMP DIE C14923 FOR DANIELS HX3 TOOL (HP CONTACT)

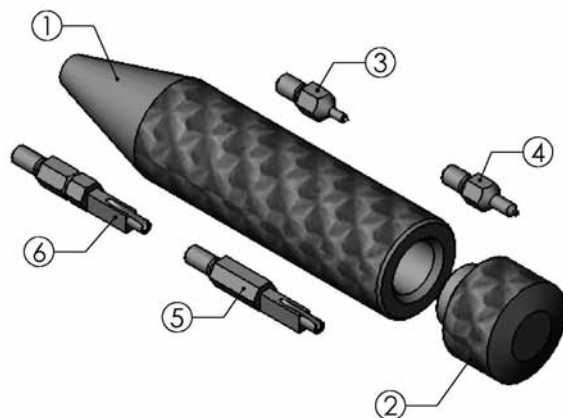


Tools

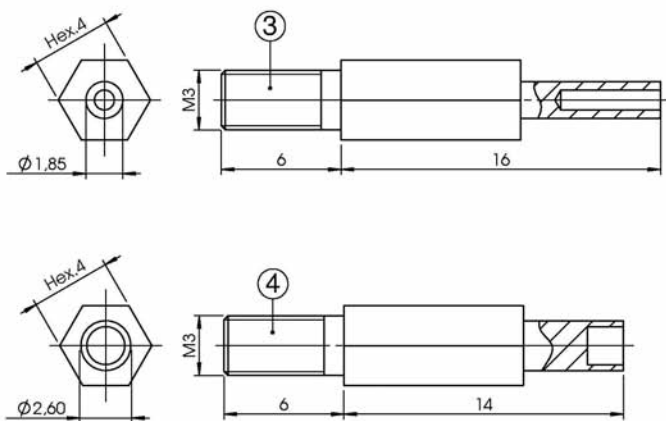
LF CONTACTS INSERTION & WITHDRAWAL TOOL P/N C12935



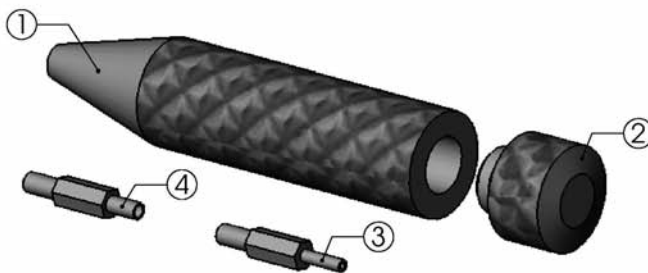
Rep	Reference	Assembly C12935
1	13241	Body
2	13240	Plug
3	13170	Female contact extraction tip
4	13242	Male contact extraction tip
5	13171	24-28 AWG insertion tip
6	13712	22 AWG insertion tip



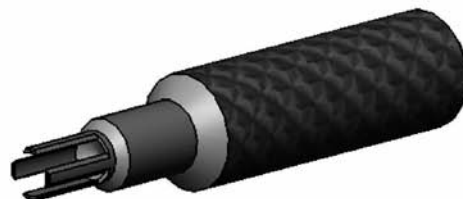
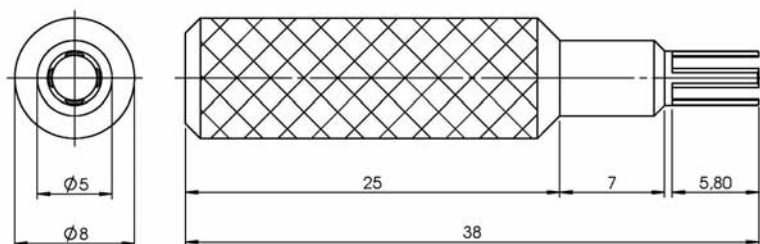
HF / HP SERIES 22 CONTACTS REMOVAL P/N C13997



Rep	Reference	Assembly C13997
1	13241	Body
2	13240	Plug
3	13995	Female contact extraction tip
4	13996	Male contact extraction tip

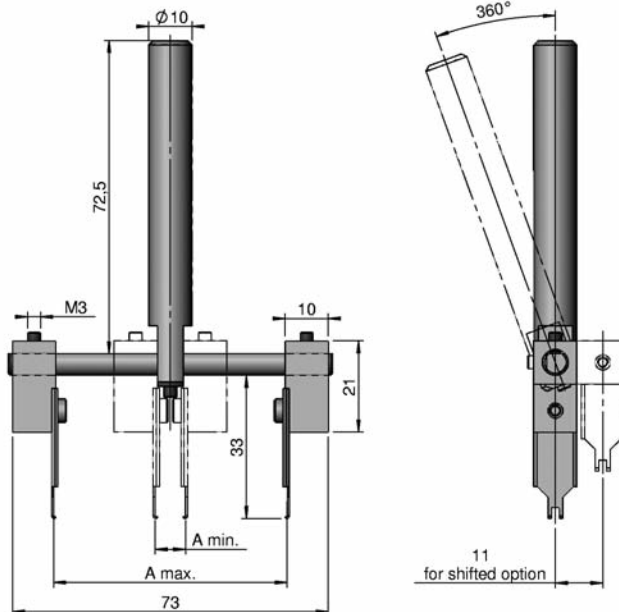
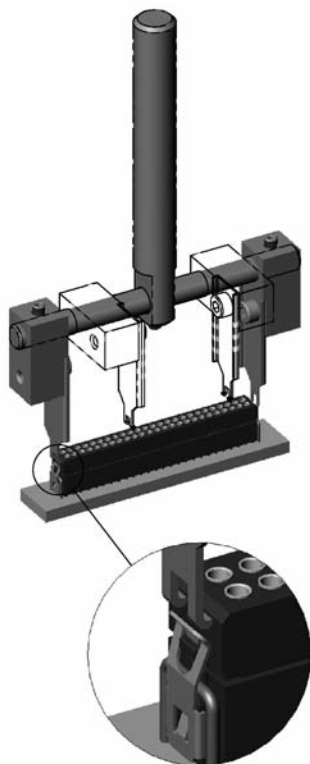


HF / HP SERIES 30 CONTACTS REMOVAL P/N 12368



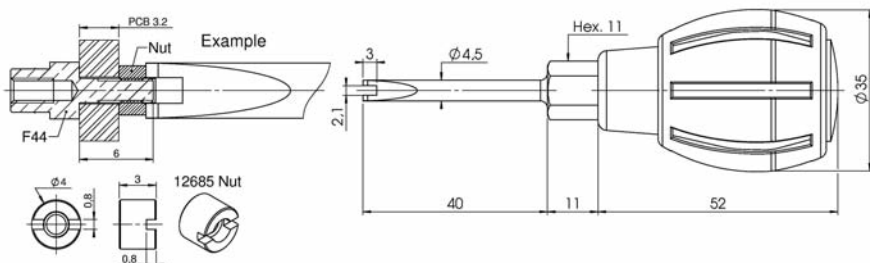
Tools

LATCH SEPARATION TOOL P/N C14790

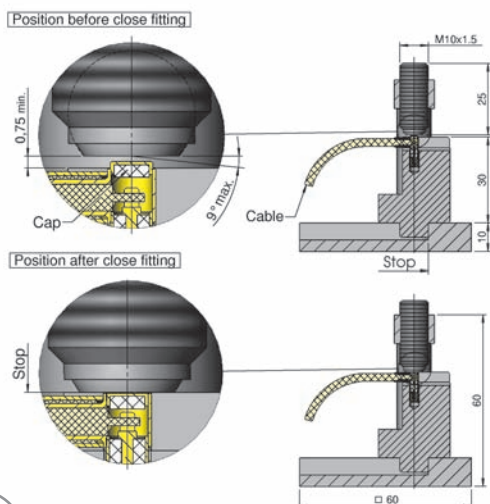


Series	A max.		A min.	
	A max.	LF contacts	A min.	LF contacts
CMM 100	53	25	7	2
CMM 200	53	50	7	4

SCREWDRIVER P/N C14743 FOR NUT P/N 12685

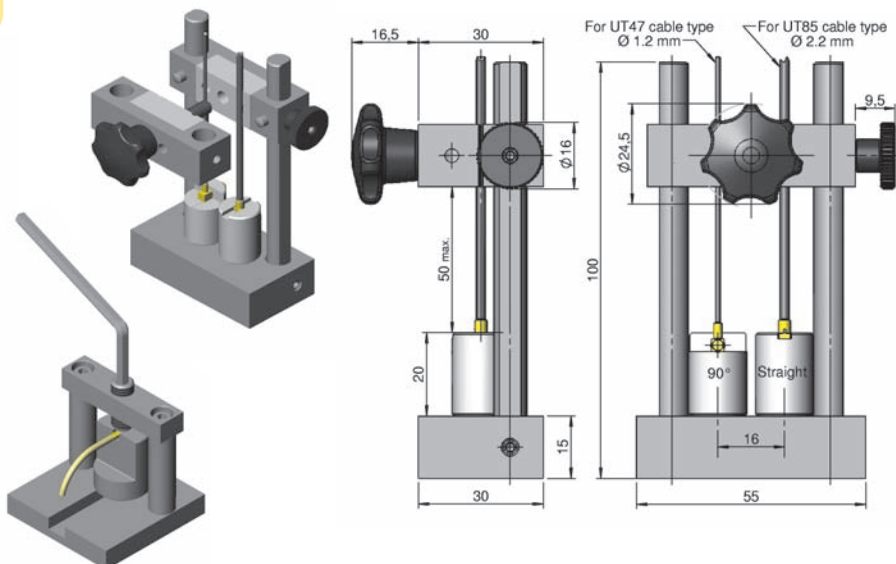


MOUNTING OF C14772 BACK CAPS



Hex. 5mm Tool not delivered

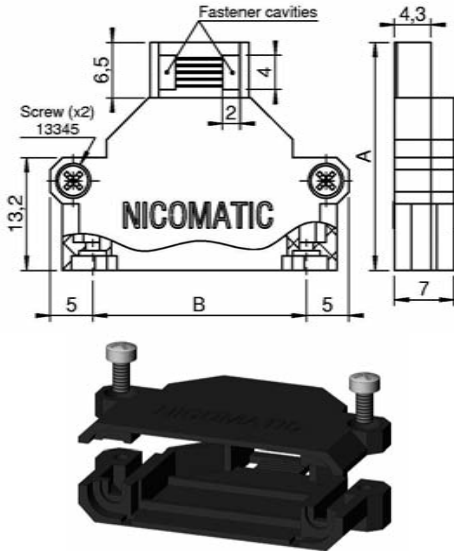
SUCOFLEX SOLDER TOOL P/N C14777



Accessories

STRAIGHT COVER FOR CMM SERIES 220 (male & female) P/N CMM-C2-XX (other upon request)

Material : high temp. thermoplastic (-55°C to +200°C)



Length B in mm
(distance between fixing hardware axes)

CMM - C2 -

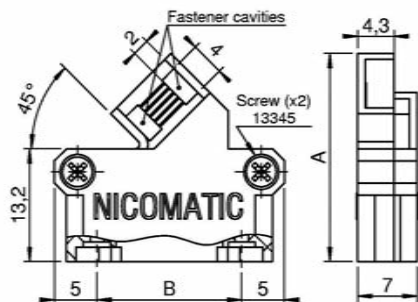
CMM 220 series

Reference	Length B	Length A	Screw (x2)
CMM-C2-11	11 mm	23,7 mm	Included
CMM-C2-15	15 mm	23,7 mm	
CMM-C2-17	17 mm	17,2 mm	
CMM-C2-25	25 mm	26,7 mm	
CMM-C2-27	27 mm	26,7 mm	
CMM-C2-31	31 mm	29,7 mm	
CMM-C2-39	39 mm	29,7 mm	
CMM-C2-45	45 mm	33,7 mm	
CMM-C2-47	47 mm	33,7 mm	
CMM-C2-49	49 mm	33,7 mm	
CMM-C2-53	53 mm	33,7 mm	
CMM-C2-55	55 mm	33,7 mm	

Note: F28 and M18 fixings are not included with the cover

45° COVER FOR CMM SERIES 220 (male & female) P/N CMM-C2-XX-45 (upon request)

Material : high temp. thermoplastic (-55°C to +200°C)



Length B in mm
(distance between fixing hardware axes)

CMM - C2 - - 4 5

CMM 220 series

45 for exit 45°

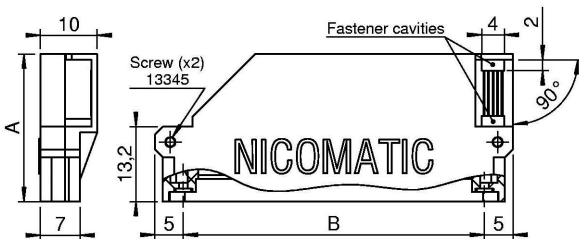
Reference	Length B	Length A	Screw (x2)
CMM-C2-17-45	17 mm	24,4 mm	Included

CMM220 male F28 fixing not included with cover

CMM220 female M18 fixing not included with cover

90° COVER FOR CMM SERIES 220 (male & female) P/N CMM-C2-XX-90 (upon request)

Material : high temp. thermoplastic (-55°C to +200°C)



Length B in mm
(distance between fixing hardware axes)

CMM - C2 - - 9 0

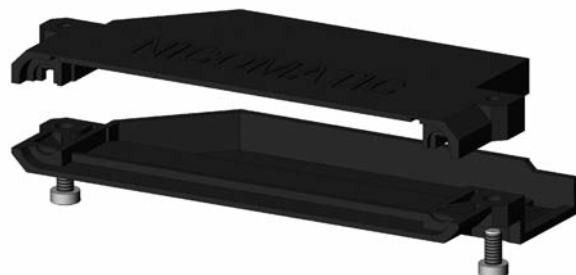
CMM 220 series

90 for exit 90°

Reference	Length B	Length A	Screw (x2)
CMM-C2-53-90	53 mm	26 mm	Included

CMM220 male F28 fixing not included with cover

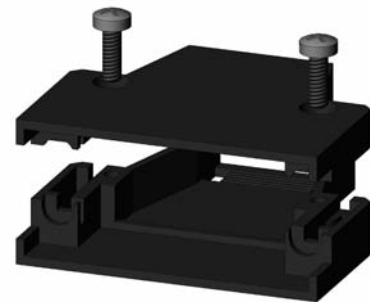
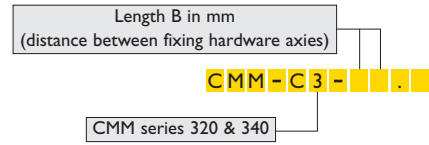
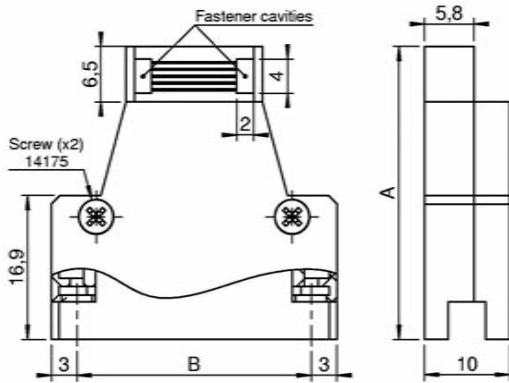
CMM220 female M18 fixing not included with cover



Accessories

COVERS STRAIGHT FOR CMM SERIES 320 & 340 (male & female) P/N CMM-C3-XX.X

Material : high temp. thermoplastic (-55°C to +200°C)



Reference	Length B	Length A	Screw (x2)
CMM-C3-27.5	27,5 mm	34,4 mm	Included
CMM-C3-45.0	45,0 mm	34,4 mm	Included

For CMM320/340 male & female
M45 or F57 fixing not included with cover

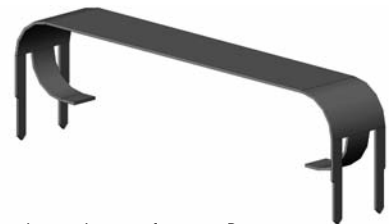
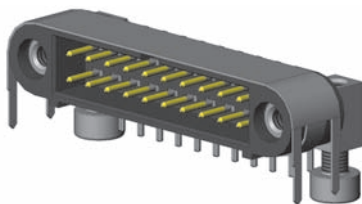
Other upon request

SHIELDING FOR CMM SERIES 220 (male straight on PCB) P/N 12997-XX (upon request)



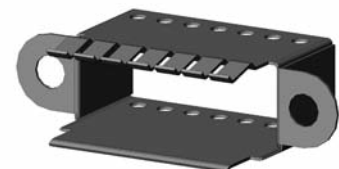
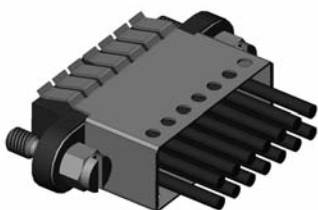
XX = distance between fixing axis B

SHIELDING FOR CMM SERIES 220 (male 90° on PCB) P/N 12998-XX (upon request)



XX = distance between fixing axis B

SHIELDING FOR CMM SERIES 220 (female on cable) P/N C13024-XX (upon request)



XX = distance between fixing axis B

Accessories

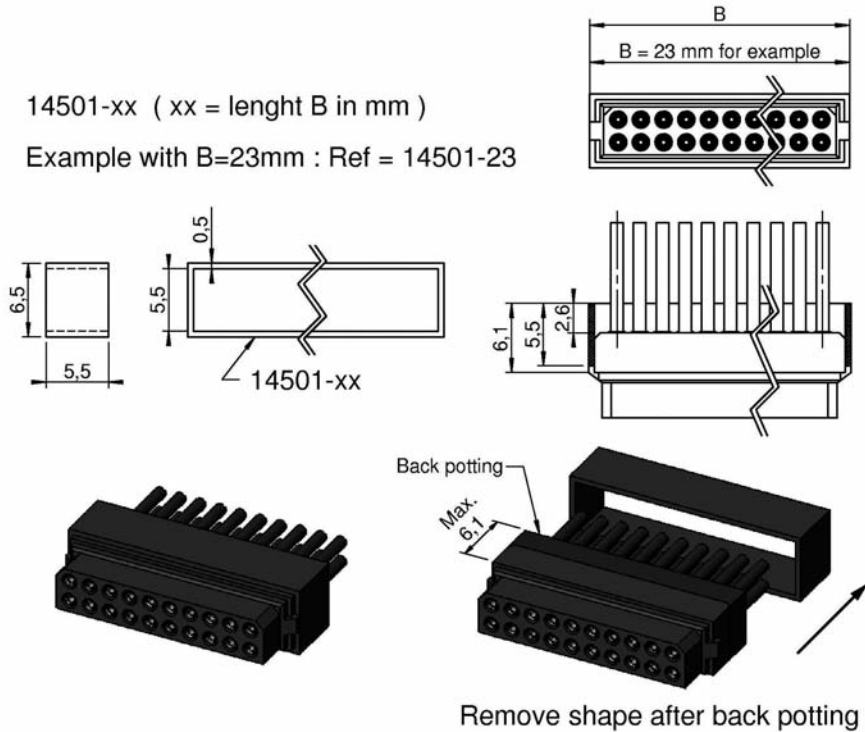
BACKPOTTING SHAPE FOR CMM SERIES 200 (female) P/N 14501-XX

Material : thermoplastic 100°C max.

Reference	Length B
I4501-07	min. 7 mm
I4501-09	9 mm
I4501-11	11 mm
I4501-13	13 mm
I4501-15	15 mm
I4501-17	17 mm
I4501-19	19 mm
I4501-21	21 mm
I4501-23	23 mm
I4501-25	25 mm
I4501-27	27 mm
I4501-29	29 mm
I4501-31	31 mm
I4501-33	33 mm
I4501-35	35 mm
I4501-37	37 mm
I4501-39	39 mm
I4501-41	41 mm
I4501-43	43 mm
I4501-45	45 mm
I4501-47	47 mm
I4501-49	49 mm
I4501-51	51 mm
I4501-53	max. 53 mm

14501-xx (xx = lenght B in mm)

Example with B=23mm : Ref = 14501-23



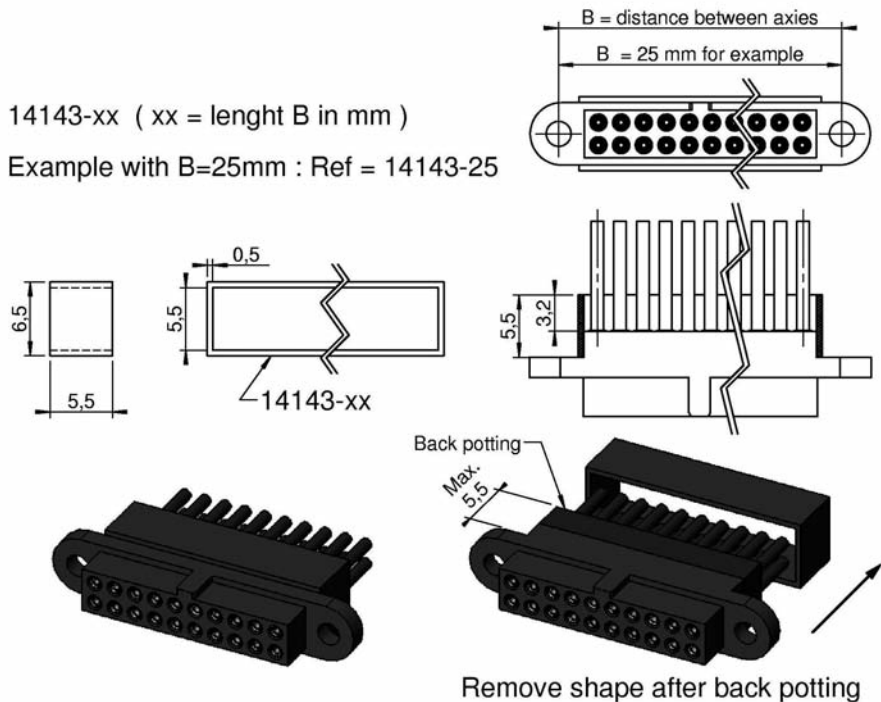
BACKPOTTING SHAPE FOR CMM SERIES 220 (male & female) P/N 14143-XX

Material : thermoplastic 100°C max.

Reference	Length B
I4143-09	min. 9 mm
I4143-11	11 mm
I4143-13	13 mm
I4143-15	15 mm
I4143-17	17 mm
I4143-19	19 mm
I4143-21	21 mm
I4143-23	23 mm
I4143-25	25 mm
I4143-27	27 mm
I4143-29	29 mm
I4143-31	31 mm
I4143-33	33 mm
I4143-35	35 mm
I4143-37	37 mm
I4143-39	39 mm
I4143-41	41 mm
I4143-43	43 mm
I4143-45	45 mm
I4143-47	47 mm
I4143-49	49 mm
I4143-51	51 mm
I4143-53	53 mm
I4143-55	55 mm
I4143-57	57 mm
I4143-59	59 mm
I4143-61	61 mm
I4143-63	63 mm
I4143-65	max. 65 mm

14143-xx (xx = lenght B in mm)

Example with B=25mm : Ref = 14143-25

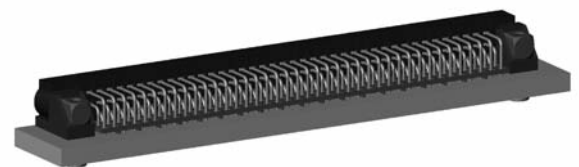
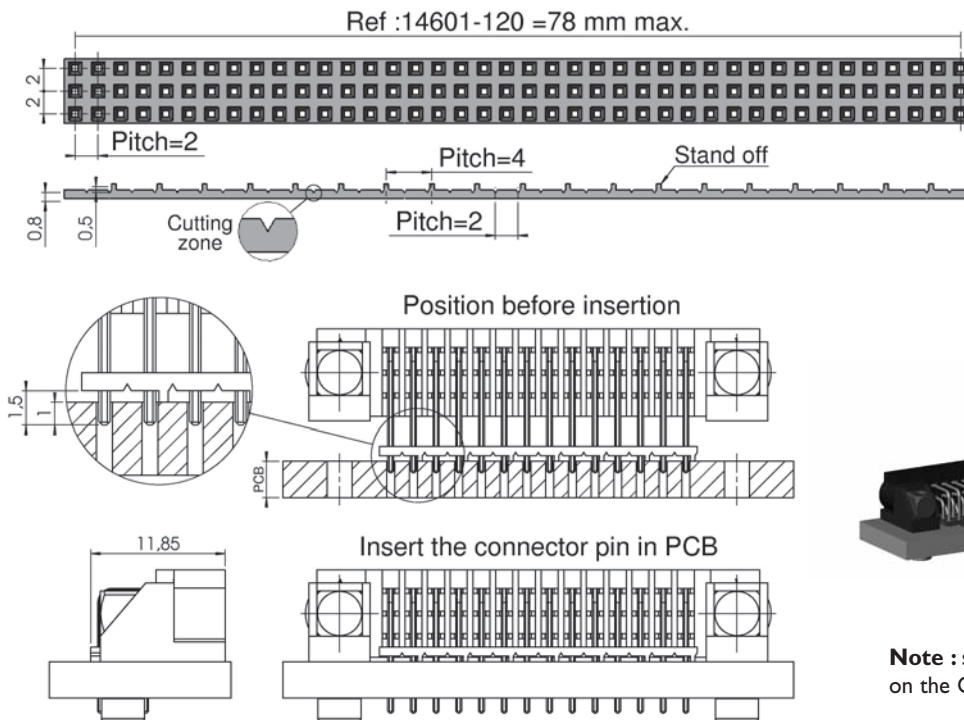


Accessories

CONTACTS ALIGNMENT PLATE P/N 14601-120

Material : high temperature thermoplastic (-55°C to +200°C)

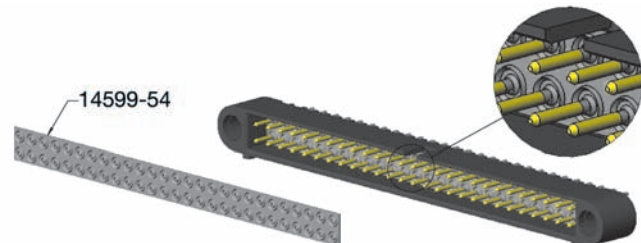
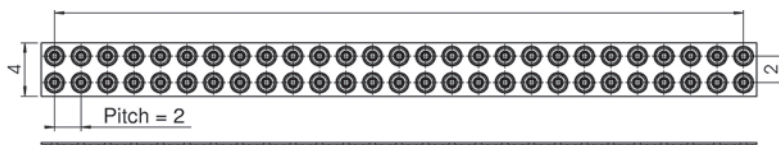
Divisible



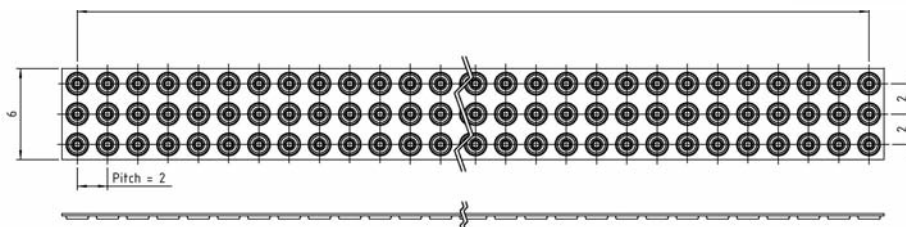
Note : systematically delivered and mounted on the CMM 320 series "right angle" (V and VL types)

SILICON INTERFACIAL SEAL (for male connector except S-C types)

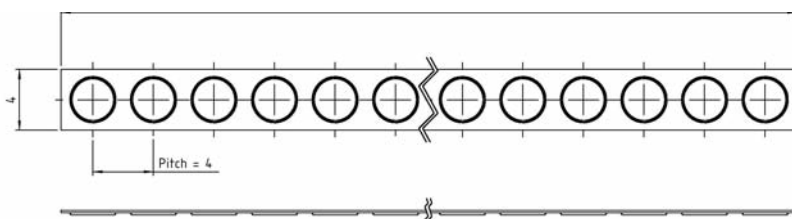
LF 220 series P/N 14599-54 = 52 mm max.



LF 320 series P/N 14980-120 = 78 mm max.



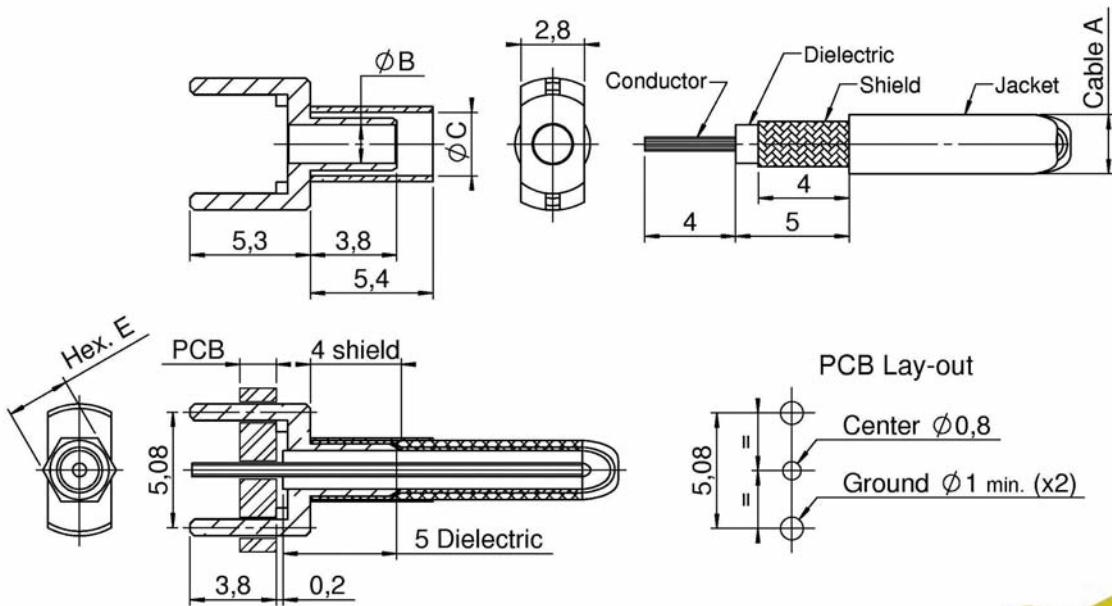
Special contacts 220 series P/N 16053-15 = 60,2 mm max.



Mix-layout on request

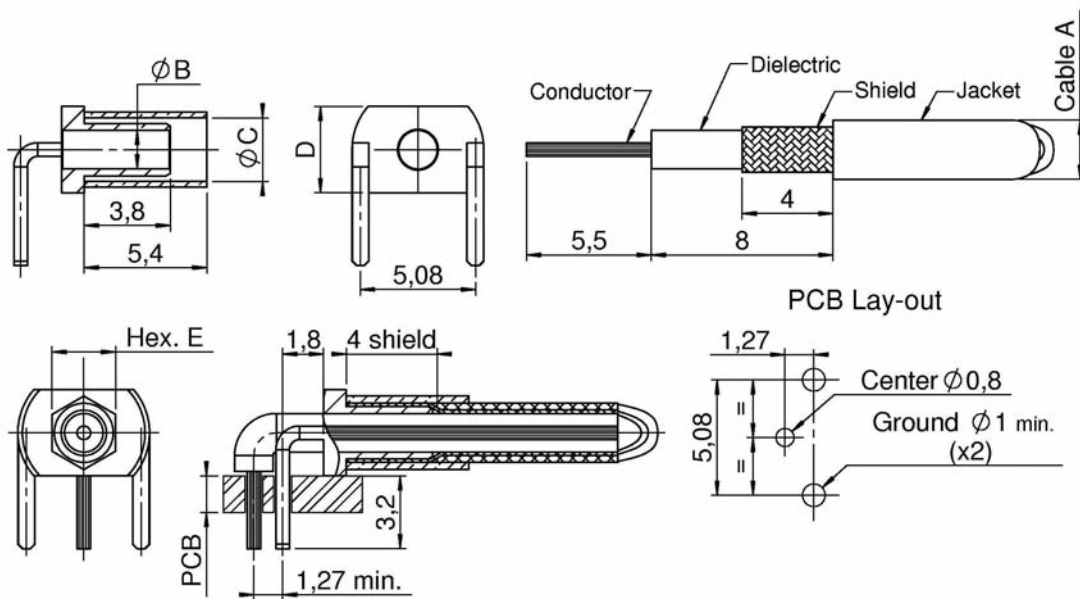
Accessories

COAX CABLE CRIMP TERMINATION (straight for cables $\varnothing 2$ and $\varnothing 2,7$)



	CI4759	CI4760
Cable A	$\varnothing 2$	$\varnothing 2,7$
$\varnothing B$	1 mm	1,7 mm
$\varnothing C$	2,2 mm	2,8 mm
Hex. E	2,4 on flat	2,8 on flat

COAX CABLE CRIMP TERMINATION (90° for cables $\varnothing 2$ and $\varnothing 2,7$)



	CI4761	CI4762
Cable A	$\varnothing 2$	$\varnothing 2,7$
$\varnothing B$	1 mm	1,7 mm
$\varnothing C$	2,2 mm	2,8 mm
Length D	3,4 mm	3,8 mm
Hex. E	2,4 on flat	2,8 on flat

