

HP : high power contacts (series 30)

PRESENTATION

Male								
Female								
	Straight PCB	90° PCB	90° SMT	90° SMT Card edge	Straight Crimp	90° Crimp	Straight solder	90° solder
	Type D				Type E			

INFORMATION TABLE

CMM RANGE		TYPICAL USE									
		TYPE OF CONTACTS TO BE USED IN THE CMM CONNECTOR WITH CAVITIES FOR HF/HP CONTACTS ONLY									
		TYPE D FOR SPECIAL CONTACTS ON PCB				TYPE E FOR SPECIAL CONTACTS ON CABLE					
		Straight on PCB	90° on PCB	90° SMT	90° SMT Card edge	Straight Crimp	90° Crimp	Straight solder	90° solder		
100/200	Male										
	Female										
220	Male	30-3300-CMM L=3,0	30-3300-45 L=4,5	30-3400-CMM L=3,0	30-3400-45 L=4,5	30-3500	30-3500-CMM no LF contact	30-3500-12	30-33XX		30-33XX
	Female	30-4300-CMM L=3,0	30-4300-45 L=4,5	30-4400-CMM L=3,0	30-4400-45 L=4,5	30-4500			30-33XX		30-43XX
320	Male	30-3300-CMM L=3,0	30-3300-45 L=4,5	30-3400-CMM L=3,0	30-3400-45 L=4,5			30-3500-12	30-43XX		30-33XX
	Female	30-4300-12 L=3,0	30-4300-14 L=4,5	30-4400-CMM L=3,0	30-4400-45 L=4,5				30-43XX		30-43XX
340	Male										
	Female										

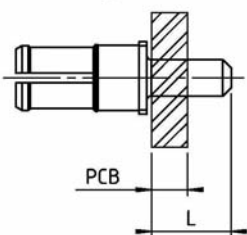
Standard contact
Any other type of contact upon request only

XX = 05, 08
Eg. 08 for 8A

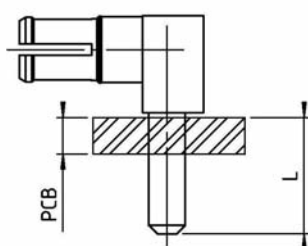
XX = 10, 15, 20
Eg. 10 for 10A

XX = 05, 08

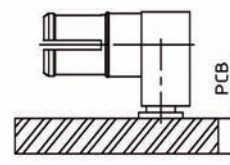
Straight on PCB



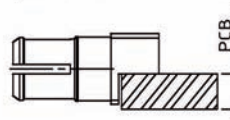
90° on PCB



90° SMT



90° SMT Card edge
(without LF contacts)



90° SMT Card edge
(with LF contacts)

