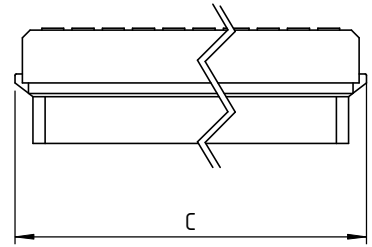
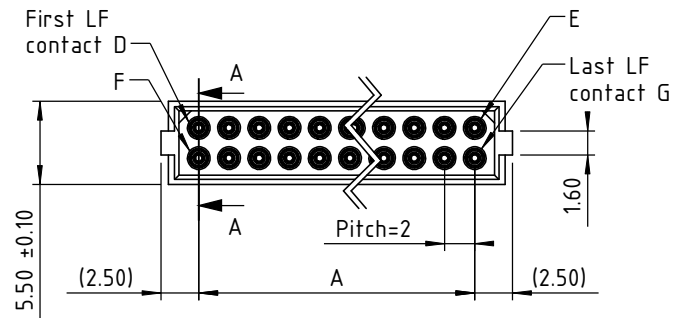
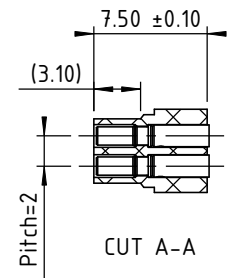
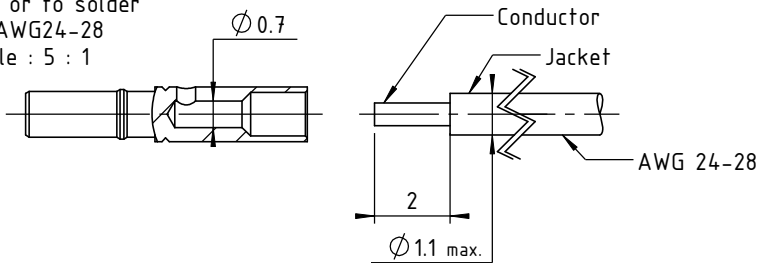


D C B A

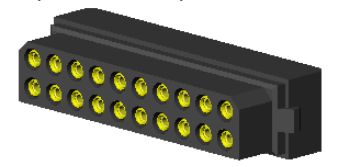
4



LF contact to crimp or to solder "S" AWG24-28 scale : 5 : 1



3D view scale: 2:1



**TECHNICALS FEATURES**

**MATERIAL**

**INSULATOR** : Special PPS (Polyphenylene Sulfide Fiberglass filled thermoplastic) UL 94-V0

- Radiation resistance
- No humidity absorption
- Oxygen free

Note : PPS characteristics are recognized for space applications

**CRIMPING SIGNAL CONTACTS :**

**Female :**

- **Body** : Copper alloy / Ni + Au 0.2µ
- **Socket body** : Beryllium copper / Ni + Au 1.25µ

**ELECTRICAL for LF Contacts**

- **All contacts** : 3 A max. @ 25°C  
2.2 A max. @ 85°C
- **Working voltage (sea level)** : Tested at 800 V DC
- **Proof voltage** : Tested at 1200 V DC
- **Contact resistance (initially)** : max. 10 mΩ
- **Insulation resistance** : 1000 MΩ min

**MECHANICAL for LF Contacts**

- **Mechanical operations** : 500 cycles min. up to 2500
- **Contact insertion and withdrawal force** : 2 N max. / 0.2 N min.
- **Contact retention in insulator** : 10 N min.
- **Contact replacement in insulator** : 3 cycles

**ENVIRONMENTAL**

- **Temperature range** : From -60°C to +260°C
- **Vibration severity** : 0.75mm, 10 g RMS 6 hours long random with superimposed sinusoid. No intermittencies measured when using an H.S.L.I. (High Speed Logic Interrupt) detector with a trip threshold of 2 ns.
- **Shock severity** : 100g for 6 ms
- **Solvent resistance** : HcFc 141 bMGX (ATOCHEM) solvent 96 hrs
- **Salt spray test** : 96 hrs
- **Humidity test** : 56 days @ 90% Humidity

Crimping following cable instruction ICLF 01  
Marking as referenced in the CMM catalogue pages 12 & 13

CONNECTOR SERIE 200 FEMALE						
LF contact number nn	Length in mm		Signal contacts reference mark number			
	A	C	D	E	F	G
04	2	7	1	2	3	4
06	4	9	1	3	4	6
08	6	11	1	4	5	8
10	8	13	1	5	6	10
12	10	15	1	6	7	12
14	12	17	1	7	8	14
16	14	19	1	8	9	16
18	16	21	1	9	10	18
20	18	23	1	10	11	20
22	20	25	1	11	12	22
24	22	27	1	12	13	24
26	24	29	1	13	14	26
28	26	31	1	14	15	28
30	28	33	1	15	16	30
32	30	35	1	16	17	32
34	32	37	1	17	18	34
36	34	39	1	18	19	36
38	36	41	1	19	20	38
40	38	43	1	20	21	40
42	40	45	1	21	22	42
44	42	47	1	22	23	44
46	44	49	1	23	24	46
48	46	51	1	24	25	48
50	48	53	1	25	26	50

Tools recommended	
LF contacts insertion & withdrawal tool	P/N C12935
Recommended hand crimp tool	P/N MH800
Recommended positionner K 1692	P/N C12929
AWG24 crimp tool setting	Position 7
AWG26 & AWG28 crimp tool setting	Position 6

**nicomatic**  
www.nicomatic.com  
Mail : nicomatic@nicomatic.fr  
Tel : +33 (0)4.50.36.13.85

2	23/03/09	H.L.	E.M.	D.Z.
Iss	Date	Drawn	Checked	Approved
Item : Connector CMM200 female to crimp or to solder AWG 24-28, nn LF contacts				

This document and drawings, sketches, and schematic drawings are the property of the NICOMATIC company, and no parts thereof may be reproduced and used without the written consent of the owner. Law dated 11.03.1902

Catalogue Reference : 202Snn

	General tolerance ±0.2	Scale 2:1	Page 1/1
--	------------------------	-----------	----------



4

3

3

2

2

1

1

D C B A A4